



Personal Development at St Johns

INTENT

At St Johns we know that the quality of education open doors, increases confidence and therefore we place high importance on delivering an ambitious and academic curriculum to all of our children so that every individual strives to be the best version of themselves.

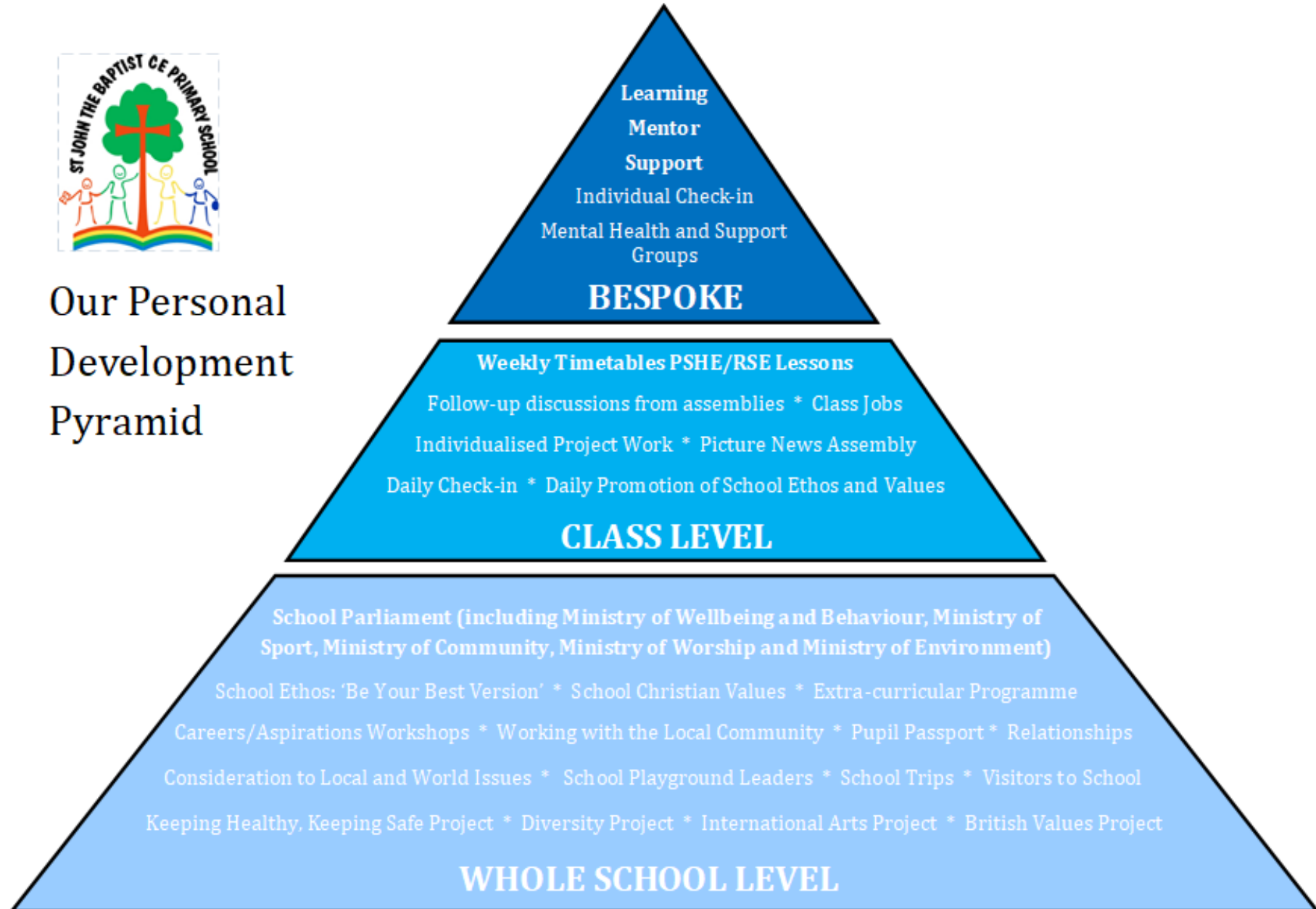
Of equal importance, is the necessity for pupils to build cultural capital and develop into well-rounded individuals who contribute positively to society. We actively promote and develop pupil's understanding and appreciation for Fundamental British Values- Rule of Law, Democracy, Individual Liberty, Mutual Respect and Tolerance.

We are proud of our personal development curriculum which goes well beyond the national curriculum. It offers unique learning experiences which provides children with enriched cultural capital.

By offering a varied and diverse set of experiences, we help to prepare pupils for life in modern day Britain.



Our Personal Development Pyramid





Personal Development is central to everything we do at St Johns

Our personal development curriculum provides significant opportunities for pupils to engage in the following key areas:

<p>Spiritual Explore beliefs and experience; respect values; discover oneself and the surrounding world; use imagination and creativity; reflect.</p>	<p>Moral Recognise right and wrong; understand consequences; investigate moral and ethical issues; offer reasoned views.</p>
<p>Social Use social skills in different contexts; work well with others; resolve conflicts; understand how communities work.</p>	<p>Cultural Appreciate cultural influences; participate in culture opportunities; understand, accept, respect and celebrate diversity.</p>



Spiritual Development

Our spiritual development enables pupils to look within themselves, at their human relationships and the wider world.

We are committed to:

- Celebrating Christianity, other religions and non-religious beliefs and values that our pupils bring as part of their family culture/heritage and to build an awareness of and respect for others' spiritual and religious beliefs
- Fostering our Christian values and building spiritual capacities to promote self-worth, self-esteem and a valuing of others
- Helping our pupils to come to an understanding of themselves as unique individuals
- Developing our pupils' curiosity, imagination, creativity and promoting a sense of awe and wonder.

We promote spirituality by

- Our KS2 and KS1 assemblies
- Class and celebration assemblies
- Class showcases
- Promoting self-esteem through behaviour approach, SEMH, emotional check
- Reflection Areas in every classroom
- School visits to places of worship
- Educational visits and visitors which inspire awe and wonder
- Themed days and weeks
- RE curriculum
- PSHE curriculum
- Cooking foods in different religions
- Our wide RE syllabus
- Faith assemblies
- Visitors to school
- Consistent teaching of values, clearly displayed around school, purposefully highlighted in teaching and learning (Behaviours for Learning)
- Assessment that allows pupils to reflect on successes and challenges
- Outdoor environment learning – Forest School
- Consistent teaching of values, clearly displayed around school, purposefully highlighted in teaching and learning (Behaviours for Learning)
- Peer critique
- Peer mentoring, coaching, buddy systems, etc. to help children develop secure relationships



Assemblies linked to the Christian Values



Parents at Science Showcase



National Emergency Service Museum Trip to enhance Learning



Class Check in Station



Visit to a mosque



Forest School Adventures



Moral Development

Our moral development enables our pupils to know what is right and wrong and to act on it accordingly.

We are committed to encouraging our pupils to:

- Be truthful and honest
- Respect the rights and property of others, their opinions and customs, even when they are different from our own
- Help others
- Solve differences of opinion

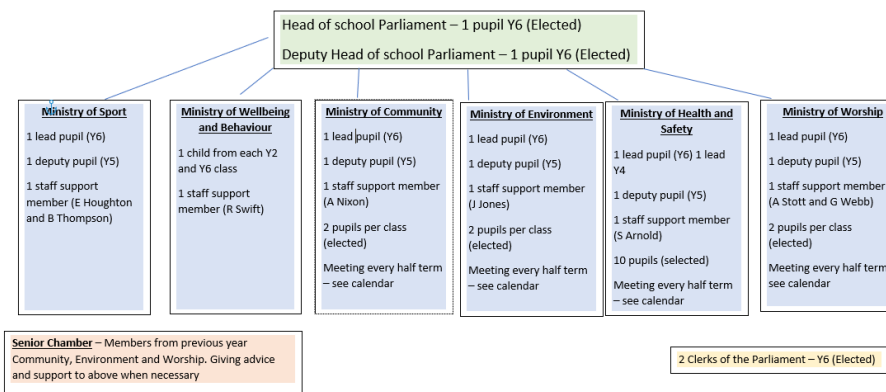
Consequently, we reject all forms of bullying, cruelty, dishonesty, violence and discrimination and have procedures in place for dealing with such instances.

We promote moral development through:

- PSHE curriculum
- Christian Values
- School Vision
- Collective Worship
- Supporting charities and fundraising
- School Parliament
- Charity work
- Workshops with children and parents
- Visitors from the community
- Opportunities for pupils to practise moral decision making e.g., through social stories, scenarios in SEMH/PSHE lessons, circle time activities



Our Charities



Parent Reading Workshop



Visitors to School



Singing in Church



Social Development

Our social development enables our pupils to understand the rights and responsibilities of living in a community and being a responsible citizen.

We are committed to:

- Fostering the skills and qualities of team building through the development of self-confidence, co-operation, sensitivity to others, reliability, initiative and understanding
- Providing an environment where pupils can take responsibility for themselves and others in school and the wider society
- Acceptance and engagement with the fundamental British values of democracy, the rule of law, individual liberty and mutual respect and tolerance of those with different faiths and beliefs.
- Enabling pupils to develop and demonstrate skills and attitudes that will allow them to participate fully in and contribute positively to life in modern Britain

We promote social development through:

- Residentials
- School productions
- School trips
- Charity development work
- Extra-curricular clubs
- Ambassadors
- Picture News
- Concerts
- Craft Evenings
- Pupils are aware and value those who make up the social community, for example, visits from parents, governors (Parents involved in teaching and learning of aspects of the curriculum e.g. culture, art, D.T.)
- Co-operative learning e.g. Kagan – oral rehearsal, behaviours for learning – collaboration, perseverance, metacognition.



Oracy for learning



Multi Skills Extra-Curricular Club



Christmas Production in Church



Christmas Craft Evening



Residential at Robin Wood



School Trip Adventures



Cultural Development

Our cultural development enables our pupils to acquire knowledge and understanding of others' cultural traditions. We value and celebrate the cultural diversity of our school and our society.

We are committed to:

- Promoting an appreciation of our own cultural tradition/s and encouraging an appreciation of other peoples' cultural traditions
- Celebrating the richness of culture and tradition
- Providing opportunities for pupils to participate in and respond positively to artistic, musical, sporting and cultural opportunities

We promote cultural development through:

- Celebrating events
- Curriculum themed weeks designed to inspire, excite and reinforce key themes
- Sharing children's own personal experience
- Visits and visitors
- Music and Dance events
- Theatre Trips
- Secondary school Visits
- School trips, galleries & theatres
- Showcase of creative arts
- Celebrating national events such as the coronation
- Love of Reading
- Supporting charities at international, national and local level
- City of Sanctuary visits to school to discuss diversity [Home Page - City of Sanctuary Sheffield](#)
- Celebrating British culture
- Celebrating festivals from around the world
- Visits to places of worship



British Values



Stay and Read Session



Dance Project in Year 5



Sheffield City of Sanctuary Visit



PSJ Got Talent Competition



Do something for funny for Money Comic Relief



Madina Mosque



PSHE

At St Johns, we use the 1 Decision scheme of work and the PSHE association as the basis for our PSHE learning. We aim to inspire pupil's interest and curiosity to know more about how to live in the wider world.

To support this, we follow the guidance outline in the PSHE Association. The core elements are split into the following three topics:

1. Health and Wellbeing
2. Relationships
3. Living in the Wider World.

We want our children to become healthy, independent and responsible members of society.

We want them to learn about rights and responsibilities and appreciate what it means to be a tolerant member of a diverse society.

We encourage children to develop their sense of self-worth by playing a positive role in contributing to school life and the wider community.

We aim to create lifelong learners who understand how to build strong and healthy relationships, manage their emotions and form positive beliefs, values and attitudes.

Mental Health and Wellbeing

Mental health is everyone's business. Good mental health means being generally able to think, feel and react in the ways that you need and want to live your life

Wellbeing is a school priority.

We have a graduated approach to support this area through:

1. **Quality First Social and Emotional Learning Curriculum** for all- [PSHE Curriculum](#)
2. **Targeted support** – from our learning mentor and support staff along with our in-house play therapist
3. **Wider Strategies**– Led by Mrs Dougal – Wellbeing and Mental Health Lead, Mrs Foster SEND lead and Mrs Arnold, Headteacher and Safeguarding Lead. These strategies include guiding additional targeted support in school, referrals to other professionals and specialists, signposting to information and organisations that can provide parents and carers with guidance and support.

This is supported by the work of our **pupil's ministry of wellbeing and behaviour** representatives



RSHE

Our Relationship and Sex Health Education is

- Age appropriate
- Based on needs of pupil
- Progressive
- Inclusive
- Delivered by staff in a safe environment
- Prepares children adequately for puberty in a timely way
- Prepares children for adult life
- Promotes positive relationships

As part of the **Science Curriculum**, we teach the following statutory objectives that build understanding about growth and reproduction:

Year One

Identify, name, draw and label the basic parts of the human body and say which part of the body is associated with each sense.

Year Two

Notice that animals, including humans, have offspring which grow into adults they should not be expected to understand how reproduction occurs.

Year Five and Year Six

Describe the life process of reproduction in some plants and animals. They should learn about the changes experienced in puberty

Supporting Families:

- To be informed of the RSE curriculum and policy
- To be consulted about changes to these
- To withdraw your child from Sex education lessons (that are outside of/ additional to the Science National Curriculum)

The curriculum on Relationships and Sex Education complements, and is supported by, the school's wider policies on Behaviour, bullying and safeguarding (PSHE; E-Safety, Relationships etc).



RE

In line with our vision of children becoming their best versions, the aim of religious education at St John's is to engage, inspire and encourage pupils, equipping them with the knowledge and skills to know about and understand a range of religions and worldviews, which will express ideas and insights of their own into the significant human questions which religions address.

RE will provoke challenging questions about meaning and purpose in life, beliefs about God, ultimate reality, issues of right and wrong and what it means to be human.

We aim to equip pupils with knowledge and understanding of a range of religions and world views, enabling them to develop their ideas, values and identity. It supports development of an aptitude for dialogue in pupils, so that they can participate positively in our society, which is diverse in relation to religions and world views.

At St John's, we see the RE curriculum impacting the pupils in the following ways:

- extend their knowledge and understanding of religions and beliefs
- develop a religious vocabulary and interpret religious symbolism in a variety of forms
- reflect on questions of meaning, offering their own thoughtful and informed insights into religious and secular world-views
- explore ultimate questions of beliefs and values in relation to a range of contemporary issues in an ever-changing society





Education Character at St Johns

We want pupils to look back on their schooling as a time of enjoyment and happiness which has inspired and challenged them in equal measure and prepared them for the ups and downs of life. Our school gives all pupils opportunities to lead and to serve. Our children learn to work independently as well as working collaboratively with others. The opportunities that we offer are designed to develop integrity, resilience, determination, self-discipline, compassion, courage and respect for self and others and leadership.

Through our rich and exciting creative curriculum, we focus on teaching pupils to be their best versions, to take pride in their work, and to be

- positive members of the school, and greater global communities.
- We want to create children who thrive on challenge, love learning, respect each other and have attributes that will ensure that they will be
- valued members of our society.
- Our Christian Values teach pupils about the personal qualities valued in society. Assemblies also enable pupils to explore issues relating directly to rules, behaviour and bullying.
- We hold a weekly Celebration Shine Assembly where we celebrate children's classroom achievements. Each week teachers choose pupils to receive certificates for a range of attributes, both personal and academic.
- We designed a Character Curriculum which enhances our children's skill set and builds their cultural capital, leading them to becoming well-rounded, contributing, members of society.
- We teach them that they have a place in the world and a valuable and important contribution to make towards keeping it safe and making it better.
- St Johns Passport along with the 50 things to do before you are 5 ¾ supports and encourages the engagement of enrichment reflecting our cultural capital.



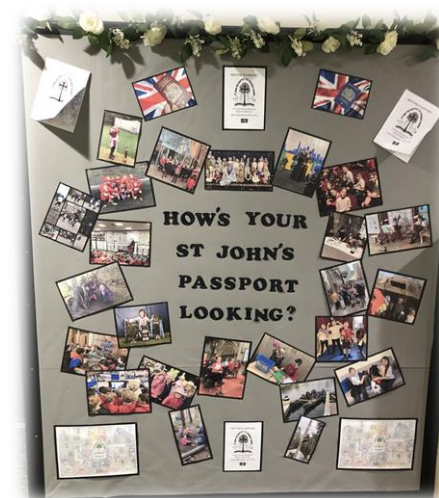
Enrichment – Extra Curricular



- All children in school are able to take part in variety of after school clubs' activities that either contribute towards their cultural capital or provide them with key life skills.
- We offer a variety of after school clubs to all year groups such as baking, art, dance, multi-sports Club, Lego, Hepp DT, netball, crafts and many more.
- We provide one free after school club for disadvantage pupils per half term.
- Sports team participate in local competitions with strong links with the local secondary school including multi skills, bench ball, dodgeball, football, tag rugby, orienteering, athletics, netball and boccia.

Curriculum Enhancements

- All children in school will be provided with the opportunity to attend engaging, exciting and purposeful educational visits outside of our school grounds, planned to bring their learning to life.
- All year groups will have the opportunity to visit educational sites and facilities that link to the teaching.
- Local visits which support and showcases our local community facilities such as visiting the library, local cinema and the community gardens
- Our educational visits are purposeful and contribute towards the development of our children's knowledge and character.
- Disadvantage families have subsidised costs for all trips
- Each child has a passport which allows children to track their achievements and experiences throughout their St Johns journey





Curriculum For All

- We actively seek to remove the barriers to learning and participation that can hinder or exclude individual pupils, or groups of pupils. This means that equality of opportunity is a reality for our children.
- The culture, practice, management and deployment of resources in our school is designed to ensure all children's needs are met. That all children belong, contribute and are valued.
- Curriculum enhancements along with extra-curricular opportunities are accessible for all.

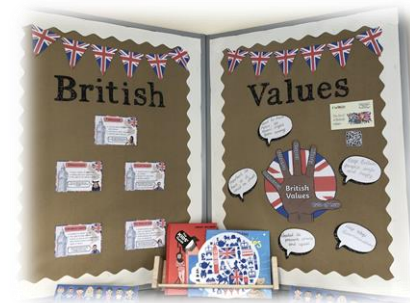
Behaviour

- In line with our vision of 'being your best version', we seek to create a caring and respectful environment in the school, underpinned by our core Christian values (love, honesty, faithfulness, kindness, forgiveness) and the knowledge that we are all God's children and of equal worth.
- The Ministry of Wellbeing and Behaviour supports this and works with the Behaviour lead in maintaining behaviour which enables all to thrive at St Johns.



British Values

- All children are taught explicitly about Modern British Values and current affairs that are happening in the wider world.
- Our assembly platform, First News, supports children's knowledge of world news and the provides them with the opportunity to take part in key topics of discussion, so their voices can be heard.
- A week project around British Values takes place across the school in Spring 2 term highlighting and focusing on retrieval and enhancement of the learning of the British Values.





Music Lessons

Throughout our children's learning journeys, they will each be provided with the opportunity to undertake music lessons from

- trained professionals in school.
- Rock Steady is a fun and inclusive in-school rock and pop band lessons for pupils to sign up and participate in. [Rocksteady Music School – Fun and inclusive in-school rock and pop band lessons for primary school children | Rocksteady Music School](#)
- We also subsidise places for private music tuition lessons for disadvantage pupils
- Sheffield Cathedral Schools Singing program is taught throughout KS2 and beyond with our after-school choir open to children from Year 2 led by Tom Daggart. - [Schools Singing Programme – Sheffield Cathedral](#)



Careers

- We are passionate about raising our children's aspirations and showing them the different routes that they can take to achieve their desired profession after leaving full time education.
- We invite guest speakers from different professions in assemblies and workshops to inspire and inform our pupils of possible career paths.
- Clear links are made to careers in the PSHE curriculum where children are introduced to different roles to inspire and inform.
- Local Dentist visit school to talk about how to look after your teeth and how to become a dentist and an oral hygienist.





Subject Ambassadors

- Children in Year 2 and UKS2 represent all curriculum subjects as a subject's ambassadors.
- Once appointed, the ambassadors follow the subjects standard operating procedure alongside the staff subject leader, and work alongside them to monitor the subject, observe and participate in pupil conferencing.

Volunteering

- Children across the school are encouraged to volunteer their time to a wide range of roles within the school such as infant dinner helpers, playground leaders, class coaches, librarians and taking an active part in the school parliament.
- Children are introduced to and work with members of the community such as health workers, sport coaches, artists, authors and representatives from the local church.
- Across the school we have volunteers who support children including reading and sewing which highlights the importance of how volunteering can make a difference to others.